



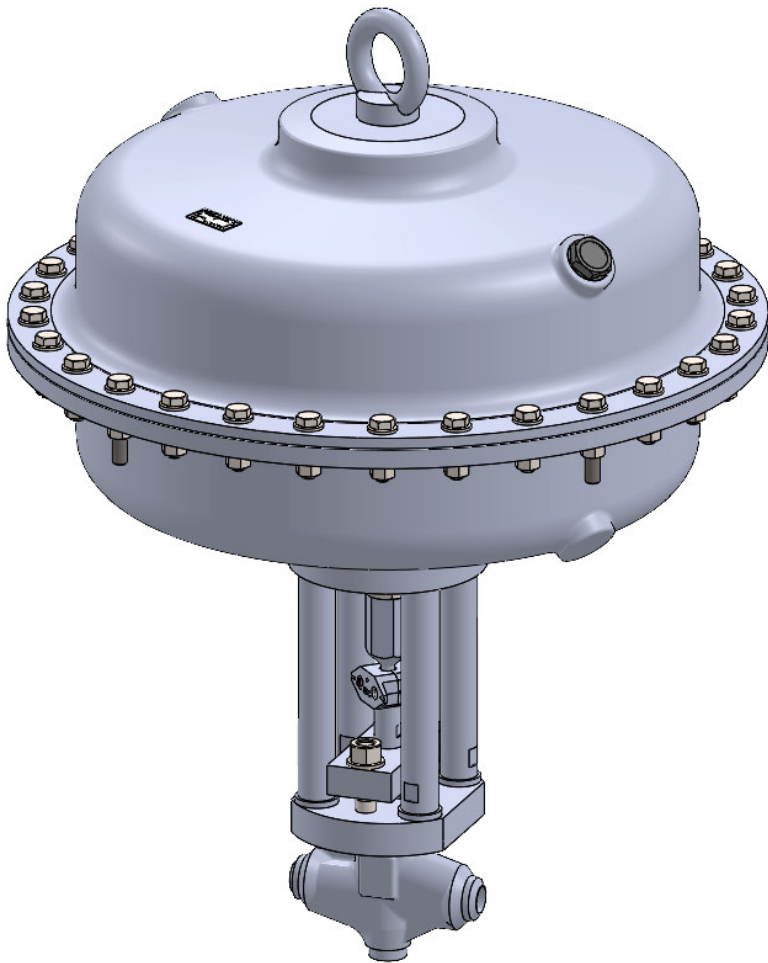
PHÖNIX

STRACK

DAUME
REGELARMATUREN



Solent & Pratt
Phoenix Ltd



Globe Valve Type S21 PN 40 - 630

Phönix Valve Group
Am Stadtbruch 6
34471 Volkmarsen

Phone:
web:
eMail:

+49 5693 988 0
www.phoenix-valvegroup.com
info@phoenix-valvegroup.com



Pneumatic operated
ON / OFF Valves

Model S21

Straight Way / Protected Bellows

Applications & Design Features



Applications

Model S21 is designed for applications involving water, steam and non aggressive fluids.

the most common applications are

- Water
- Gas
- Oil
- Steam
- fluids of similar nature.

The unique valve design guarantees reliable on/off and throttling performance and excellent protection against demanges under high pressure water and steam applications. actuator or accessories preferences.

Design Features

Packing

- for TA-luft applications the spring loaded design is available
- with integrated packing in the body

Stem

- coupled stem, allowed the choice of special materials
- non rotating stem

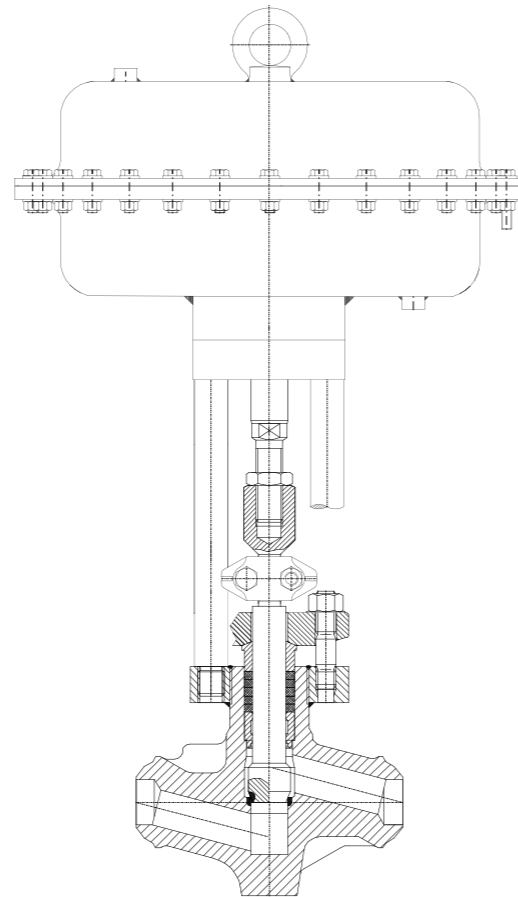
Body and Bonnet

- bodies are forgings with larger than required wall thickness
- coverless design with bayonet-type connection
- position indicator gasket flow or blowout
- yoke suitable for mounting of different types of actuators

Seats

- solid hardfacings for outstanding corrosion
- knife edge metal-to-metal seat for bubble-tight shutoff
- replaceable disc for inexpensive maintenance and wear resistance

= zero emissions, zero seat leakage, low maintenance



Pneumatic operated
ON / OFF Valves

Model S21

Straight Way / Protected Bellows

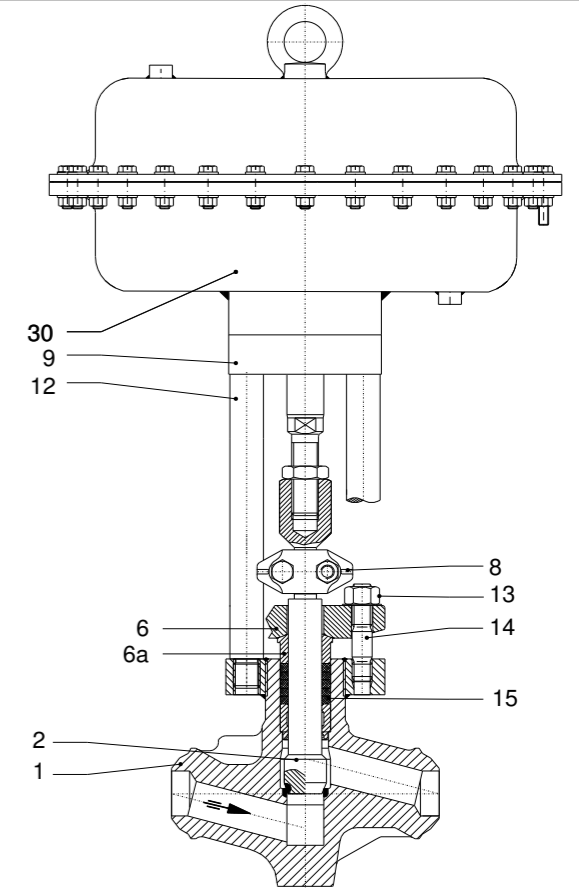
Standard Materials of Construction



Other materials per customer requirements are available!

Notes

Phönix reserves the right to change product design and specification without notice!



Materials

Item	Part Name	Carbon steel Model S21C up to 450°C	low temp. Carbon steel Model S21T -40°C up to 120°C	Stainless steel Model 350V -200°C up to 400°C
1	Body	1.0460 1.5415 1.7335 1.7380 1.4903	1.0566	1.4404
2	Seat overlay	Stellite 21 (≈ 32HRC)	Stellite 21 (≈ 32HRC)	Stellite 21 (≈ 32HRC)
	Disc with lower stem	1.4922	1.4922	1.4571
	Overlay	Stellite 6 (≈ 42HRC)	Stellite 6 (≈ 42HRC)	Stellite 6 (≈ 42HRC)
6	Gland follower	1.7380	1.7380	1.7380
6a	Pressure piece	1.7335	1.4571	1.4571
8	Coupling	1.4408	1.4408	1.4408
9	Bridge	1.0460	1.0460	1.0460
12	Pillar	1.0501	1.4057	1.4057
13	Hex. nut	1.7258	1.7258	1.7258
14	Stud bolt	1.7709	1.7709	1.7709
15	Packing	Graphite	Graphite	Graphite
30	Pneumatic actuator Silencer	PHÖNIX Model MA1/ 2/ 3/ 3T 1.4571	PHÖNIX Model MA1/ 2/ 3/ 3T 1.4571	PHÖNIX Model MA1/ 2/ 3/ 3T 1.4571

Pneumatic operated ON / OFF Valves

Model S21

Straight Way / Protected Bellows



PN40 -630 SIZES DN15 - DN150

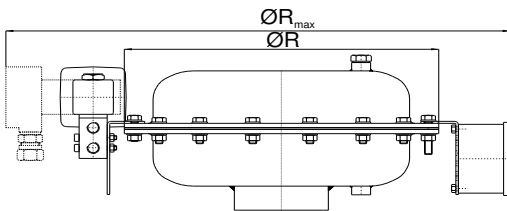
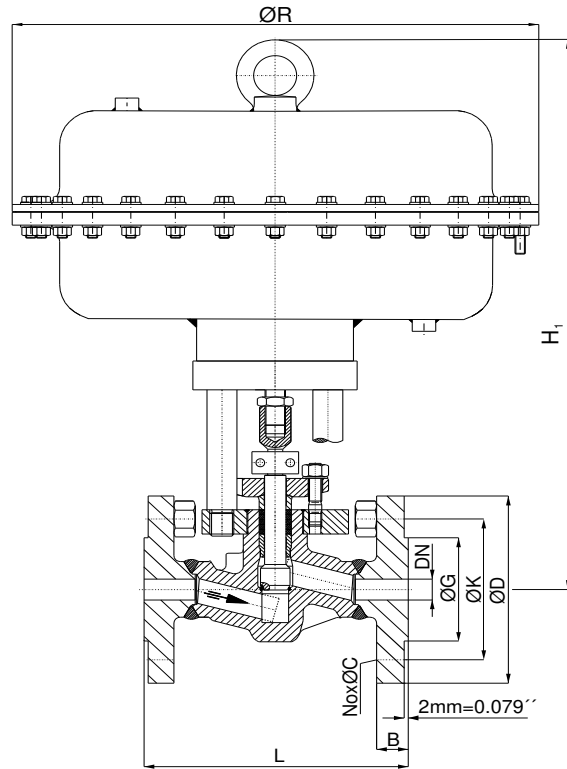
FIG. NO. S21

OPTIONS

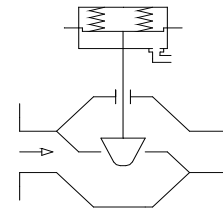
- SEE ADDITIONAL PAGES FOR STANDARD OPTIONS
- OTHER CUSTOMER SPECIFIC DESIGNS ON REQUEST
- OTHER NOMINAL SIZES AND PRESSURE RATINGS ON REQUEST

NOTES

- MARKING ACC. TO EN19, AD-A4, PED 97/23, CE
- STANDARD TESTS ACC. TO DIN EN12266, ISO 5208
- PRESERVATION ACC. TO MANUFACTURER STANDARD
- CONNECTIONS:
 - FLANGES ACC. TO DIN EN1092-1
 - BUTT WELD ENDS ACC. TO DIN EN12627
 - SOCKET WELD ENDS ACC. TO DIN EN12760
- F-T-F DIMENSIONS:
 - FLANGES ACC. TO DIN EN558-1
 - BUTT WELD ENDS ACC. TO DIN EN12982
 - SOCKET WELD ENDS MANUF. STANDARD



ØR: Diameter of actuator
without accessoires
ØRmax: Diameter of actuator
with expected accessoires



DIMENSIONS & WEIGHTS - selected actuator sizes

Flow to open (FTO), Failed position: spring closed (FC)

DN	UNIT	L GLOBE	H	ØR / ØRmax	PHÖNIX ACTUATOR* Δp=630 bar	ØG	ØK	No x ØC	ØD	B	WEIGHT	Kv [m³/h] CV [USGal/min]
15	[MM] [IN]	130 5.1	1010 39.9	266 / 516 10.5 / 20.4	MA.3T 0,6-3,0	45 1.8	65 2.6	4 x 14 4 x 0.55	95 3.7	16 0.63	298 kg 655.6 lbs	3,3 3.94
20	[MM] [IN]	150 5.9	1010 39.9	266 / 516 10.5 / 20.4	MA.3T 0,6-3,0	58 2.3	75 3	4 x 14 4 x 0.55	105 4.1	18 0.71	301 kg 662.2 lbs	6,8 7.9
25	[MM] [IN]	160 6.3	1010 39.9	266 / 516 10.5 / 20.4	MA.3T 0,6-3,0	68 2.7	85 3.3	4 x 14 4 x 0.55	115 4.5	18 0.71	303 kg 666.6 lbs	8,3 9.65
32	[MM] [IN]	180 7.1	ON REQUEST	590 / 840 23.5 / 33.1	K10-500T 6x9011	78 3.1	100 3.9	4 x 18 4 x 0.71	140 5.5	18 0.71	ON REQUEST	12 14
	[MM] [IN]	180 7.1	ON REQUEST	770 / 1020 30.3 / 40.2	5600 cm ² *** 0,6-3,0	78 3.1	100 3.9	4 x 18 4 x 0.71	140 5.5	18 0.71	995 kg 2189 lbs	12 14
40	[MM] [IN]	200 7.9	ON REQUEST	590 / 840 23.5 / 33.1	K10-500T 6x9011	88 3.5	110 4.3	4 x 18 4 x 0.71	150 5.9	18 0.71	ON REQUEST	20 23
	[MM] [IN]	200 7.9	ON REQUEST	770 / 1020 30.3 / 40.2	5600 cm ² *** 0,6-3,0	88 3.5	110 4.3	4 x 18 4 x 0.71	150 5.9	18 0.71	995 kg 2189 lbs	20 23
50	[MM] [IN]	230 9.1	ON REQUEST	590 / 840 23.5 / 33.1	K10-500T 6x9011	102 4	125 4.9	4 x 18 4 x 0.71	165 6.5	20 0.79	ON REQUEST	29 34
	[MM] [IN]	230 9.1	ON REQUEST	770 / 1020 30.3 / 40.2	5600 cm ² *** 0,6-3,0	102 4	125 4.9	4 x 18 4 x 0.71	165 6.5	20 0.79	1012 kg 2226.4 lbs	29 34

* Air Supply 4 bar. For different Δp's and air supply pressures see pages xxx

** Air supply 5 bar

*** Air supply 7,5 bar (Pressure booster VBA 1110 requested)

PHÖNIX • P +49 5693 988-0 • F +49 5693 988-178 • info@phoenix-valvegroup.com • https://phoenix-valvegroup.com

Pneumatic operated ON / OFF Valves

Model S21

Straight Way / Protected Bellows



PN40 - 630 SIZES DN15 - DN50

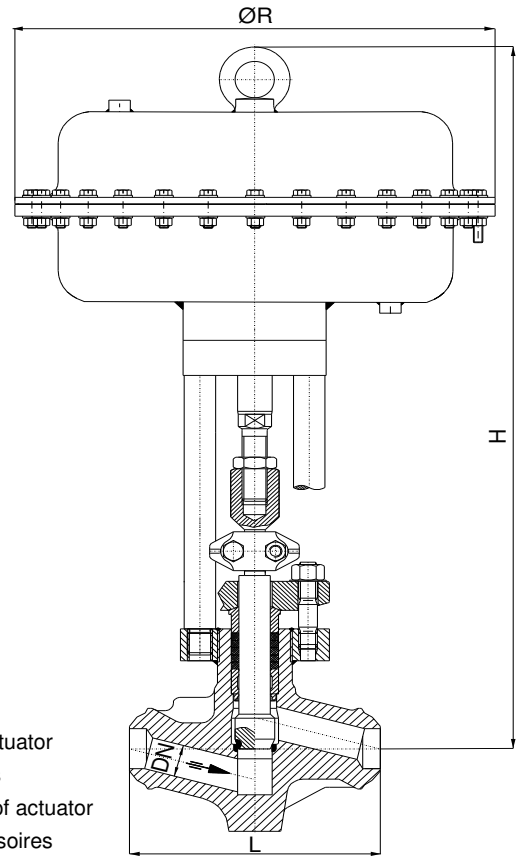
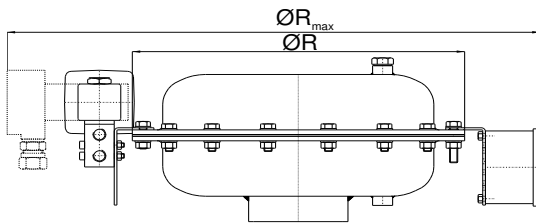
FIG. NO. S21

OPTIONS

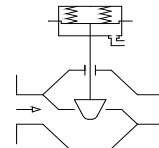
- SEE ADDITIONAL PAGES FOR STANDARD OPTIONS
- OTHER CUSTOMER SPECIFIC DESIGNS ON REQUEST
- OTHER NOMINAL SIZES AND PRESSURE RATINGS ON REQUEST

NOTES

- MARKING ACC. TO EN19, AD-A4, PED 97/23, CE
- STANDARD TESTS ACC. TO DIN EN12266, ISO 5208
- PRESERVATION ACC. TO MANUFACTURER STANDARD
- CONNECTIONS:
 - FLANGES ACC. TO DIN EN1092-1
 - BUTT WELD ENDS ACC. TO DIN EN12627
 - SOCKET WELD ENDS ACC. TO DIN EN12760
- F-T-F DIMENSIONS:
 - FLANGES ACC. TO DIN EN558-1
 - BUTT WELD ENDS ACC. TO DIN EN12982
 - SOCKET WELD ENDS MANUF. STANDARD



ØR: Diameter of actuator without accessories
ØRmax: Diameter of actuator with expected accessories



DIMENSIONS & WEIGHTS - selected actuator sizes

Flow to open (FTO), Failed position: spring closed (FC)

DN	UNIT	L GLOBE	H	ØR / ØRmax	PHÖNIX ACTUATOR* Δp=630 bar	WEIGHT	Kv [m³/h] CV [USGal/min]
15	[MM] [IN]	130 5.1	1010 39.9	266 / 516 10.5 / 20.4	MA.3T 0,6-3,0	293,5 kg 645.7 lbs	3,3 3.94
20	[MM] [IN]	150 5.9	1010 39.9	266 / 516 10.5 / 20.4	MA.3T 0,6-3,0	293,5 kg 645.7 lbs	6,8 7.9
25	[MM] [IN]	160 6.3	1010 39.9	266 / 516 10.5 / 20.4	MA.3T 0,6-3,0	293,5 kg 645.7 lbs	8,3 9.65
32	[MM] [IN]	180 7.1	ON REQUEST	590 / 840 23.5 / 33.1	K10-500T 6x9011	ON REQUEST	12 14
32	[MM] [IN]	180 7.1	ON REQUEST	770 / 1020 30.3 / 40.2	5600 cm ² ** 0,6-3,0	977 kg 2149.4 lbs	12 14
40	[MM] [IN]	200 7.9	ON REQUEST	590 / 840 23.5 / 33.1	K10-500T 6x9011	ON REQUEST	20 23
40	[MM] [IN]	200 7.9	ON REQUEST	770 / 1020 30.3 / 40.2	5600 cm ² ** 0,6-3,0	977 kg 2149.4 lbs	20 23
50	[MM] [IN]	230 9.1	ON REQUEST	590 / 840 23.5 / 33.1	K10-500T 6x9011	ON REQUEST	29 34
50	[MM] [IN]	230 9.1	ON REQUEST	770 / 1020 30.3 / 40.2	5600 cm ² ** 0,6-3,0	977 kg 2149.4 lbs	29 34

* Air Supply 4 bar. For different Δp's and air supply pressures see pages xxx

** Air supply 5 bar

*** Air supply 7,5 bar (Pressure booster VBA 1110 requested)

Pneumatic operated ON / OFF Valves

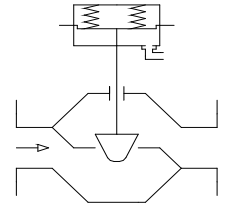
Model S21

Straight Way / Protected Bellows



ACTUATOR PARAMETERS

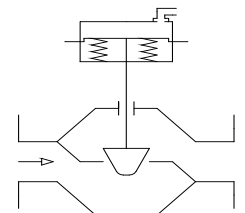
FIG. NO. S21 / ...



MAXIMUM DIFFERENTIAL PRESSURE [BAR]

FAIL CLOSE / FLOW TO OPEN

NOMINAL SIZE DN/NPS	DESIGNATION	DIFFERENTIAL PRESSURE [bar]												
		630	500	400	315	250	200	160	125	100	80	63	50	
25 1"	Actuator PAW		MA.3T	MA.3	MA.3	MA.2T	MA.2T	MA.2T	MA.2T	MA.2	MA.2	MA.2	MA.1	MA.1
	Spring range	[bar]	0,6-3,0	1,0-5,0	0,8-4,0	1,0-5,0	0,8-4,0	0,6-3,0	0,6-3,0	0,8-4,0	0,6-3,0	0,6-3,0	0,8-4,0	0,6-3,0
	AIR SUPPLY	[bar]	4,0	6,0	5,0	6,0	5,0	4,0	4,0	5,0	4,0	4,0	5,0	4,0
	operation time													
	- close tc / open to	[sec]	4,0 / 3,0 ¹⁾	6,0 / 5,0	6,0 / 5,0	5,0 / 4,0	5,0 / 4,0	4,0 / 4,0	4,0 / 4,0	6,0 / 5,0	5,0 / 4,0	5,0 / 4,0	4,0 / 3,0	4,0 / 3,0
	- air pipe size	[mm]	18 x 2	18 x 2	18 x 2	12 x 1	12 x 1	12 x 1	12 x 1	12 x 1	12 x 1	12 x 1	12 x 1	12 x 1
	- Solenoid Valve included		yes	yes	yes	yes	yes	yes	yes	yes	yes	yes	yes	yes
* Kv-Value	[m³/h]	0,92	0,92	0,92	0,92	0,92	0,92	0,92	0,34	0,34	0,34	0,34	0,34	
50 2"	Actuator PAW		K10-500T	K10-500T	K10-400T	MA.3T	MA.3T	MA.3T	MA.3	MA.3	MA.3	MA.3	MA.2T	MA.2T
	Spring range [bar]	[bar]	6x1.9011	6x1.9011	6x1.9011	0,8-4,0	0,6-3,0	0,6-3,0	0,8-4,0	0,6-3,0	0,6-3,0	0,8-4,0	0,6-3,0	1,0-5,0
	AIR SUPPLY [bar]	[bar]	7,5	6,0	7,5	5,5	4,5	3,5	5,5	4,5	3,5	5,0	4,0	6,0
	operation time													
	- close / open [sec]	[sec]	6,0 / 5,0 ¹⁾	6,0 / 5,0 ¹⁾	6,0 / 5,0 ¹⁾	4,0 / 4,0 ¹⁾	5,0 / 4,0 ¹⁾	4,0 / 3,0 ¹⁾	8,0 / 6,0	8,0 / 5,0	6,0 / 6,0	5,0 / 4,0	5,0 / 4,0	7,0 / 5,0
	- air pipe size	[mm]	18 x 2	18 x 2	18 x 2	18 x 2	18 x 2	18 x 2	18 x 2	18 x 2	18 x 2	12 x 1	12 x 1	12 x 1
	- Solenoid Valve included		yes	yes	yes	yes	yes	yes	yes	yes	yes	yes	yes	yes
* Kv-Value	[m³/h]	0,92	0,92	0,92	0,92	0,92	0,92	0,92	0,92	0,92	0,92	0,92	0,34	
50 2"	alternative actuator²⁾	[cm ²]	5600	5600	5600									
	Spring range [bar]	[bar]	0,6-3,0	0,5-2,5	0,4-2,0									
	AIR SUPPLY [bar]	[bar]	5	4,5	3,5									
	operation time													
	- close / open [sec]	[sec]	10,0 / 9,0 ¹⁾	9,0 / 7,0 ¹⁾	8,0 / 7,0 ¹⁾									
	- air pipe size	[mm]	18 x 2	18 x 2	18 x 2									
	- Solenoid Valve included		yes	yes	yes									
* Kv-Value	[m³/h]	0,92	0,92	0,92										



MAXIMUM DIFFERENTIAL PRESSURE [BAR]

FAIL OPEN / FLOW TO OPEN

NOMINAL SIZE DN/NPS	DESIGNATION	DIFFERENTIAL PRESSURE [bar]												
		630	500	400	315	250	200	160	125	100	80	63	50	
25 1"	Actuator PAW		MA.3T	MA.3	MA.3	MA.2T	MA.2T	MA.2T	MA.2	MA.2	MA.1	MA.1	MA.1	MA.0,5
	Spring range	[bar]	0,4-2,0	0,6-3,0	0,4-2,0	0,8-4,0	0,4-2,0	0,4-2,0	0,4-2,0	0,4-2,0	0,4-2,0	0,4-2,0	0,4-2,0	0,4-1,6
	AIR SUPPLY	[bar]	4,0	6,0	5,0	6,0	5,0	4,0	6,0	4,5	6,0	5,0	4,0	5,0
	operation time													
	- close tc / open to	[sec]	5,0 / 5,0 ¹⁾	6,0 / 10,0	9,0 / 10,0	4,0 / 6,0	4,0 / 7,0	4,0 / 6,0	5,0 / 9,0	5,0 / 8,0	4,0 / 6,0	4,0 / 5,0	4,0 / 5,0	2,0 / 3,0
	- air pipe size	[mm]	18 x 2	18 x 2	18 x 2	12 x 1	12 x 1	12 x 1	12 x 1	12 x 1	12 x 1	12 x 1	12 x 1	12 x 1
	- Solenoid Valve included		yes	yes	yes	yes	yes	yes	yes	yes	yes	yes	yes	yes
* Kv-Value	[m³/h]	0,92	0,92	0,92	0,92	0,92	0,92	0,34	0,34	0,34	0,34	0,34	0,34	
50 2"	Actuator PAW		K10-500T	K10-500T	K10-400T	MA.3T	MA.3T	MA.3	MA.3	MA.3	MA.2T	MA.2T	MA.2	MA.2
	Spring range [bar]	[bar]	2x1.9011	6x1.9011	6x1.9011	0,8-4,0	0,6-3,0	0,4-2,0	0,4-2,0	0,4-2,0	0,6-3,0	0,4-2,0	0,4-2,0	0,4-2,0
	AIR SUPPLY [bar]	[bar]	7,0	6,0	7,5	5,5	4,5	6,0	5,0	4,0	6,0	4,0	6,0	5,0
	operation time													
	- close / open [sec]	[sec]	4,0 / 7,0 ¹⁾	4,0 / 6,0 ¹⁾	4,0 / 6,0 ¹⁾	4,0 / 6,0 ¹⁾	4,0 / 5,0 ¹⁾	3,0 / 4,0 ¹⁾	7,0 / 11,0	7,0 / 10,0	5,0 / 6,0	5,0 / 6,0	6,0 / 10,0	5,0 / 10,0
	- air pipe size	[mm]	18 x 2	18 x 2	18 x 2	18 x 2	18 x 2	18 x 2	18 x 2	18 x 2	12 x 1	12 x 1	12 x 1	12 x 1
	- Solenoid Valve included		yes	yes	yes	yes	yes	yes	yes	yes	yes	yes	yes	yes
* Kv-Value	[m³/h]	0,92	0,92	0,92	0,92	0,92	0,92	0,92	0,92	0,92	0,92	0,34	0,34	
50 2"	alternative actuator²⁾	[cm ²]	5600	5600	2800									
	Spring range [bar]	[bar]	0,4-2,0	0,4-2,0	0,4-2,0									
	AIR SUPPLY [bar]	[bar]	5,0	4,0	6,0									
	operation time													
	- close / open [sec]	[sec]	9,0 / 12,0 ¹⁾	8,0 / 10,0 ¹⁾	5,0 / 8,0 ¹⁾									
	- air pipe size	[mm]	18 x 2	18 x 2	18 x 2									
	- Solenoid Valve included		yes	yes	yes									
* Kv-Value	[m³/h]	0,92	0,92	0,92										

1) with quick exhaust valve Kvs = 5,0 m³/h
with volume booster kvs = 10 m³/h

2) nom. travel 120 mm, max. travel 160 mm

Pneumatic operated ON / OFF Valves

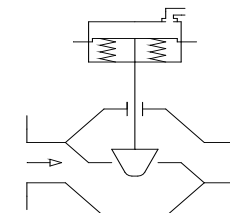
Model S21

Straight Way / Protected Bellows



ACTUATOR PARAMETERS

FIG. NO. S21 / ...



MAXIMUM DIFFERENTIAL PRESSURE [BAR]

FAIL OPEN / FLOW TO OPEN

NOMINAL SIZE DN/NPS	DESIGNATION		DIFFERENTIAL PRESSURE [bar]												
			630	500	400	315	250	200	160	125	100	80	63	50	
25 1"	Actuator PAW		MA.3T	MA.3	MA.3	MA.2T	MA.2T	MA.2T	MA.2	MA.2	MA.1	MA.1	MA.1	MA.0,5	
	Spring range	[bar]	0,4-2,0	0,6-3,0	0,4-2,0	0,8-4,0	0,4-2,0	0,4-2,0	0,4-2,0	0,4-2,0	0,4-2,0	0,4-2,0	0,4-2,0	0,4-1,6	
	AIR SUPPLY	[bar]	4,0	6,0	5,0	6,0	5,0	4,0	6,0	4,5	6,0	5,0	4,0	5,0	
	operation time														
	- close tc / open to	[sec]	5,0 / 5,0 ¹⁾	6,0 / 10,0	9,0 / 10,0	4,0 / 6,0	4,0 / 7,0	4,0 / 6,0	5,0 / 9,0	5,0 / 8,0	4,0 / 6,0	4,0 / 5,0	4,0 / 5,0	2,0 / 3,0	
	- air pipe size	[mm]	18 x 2	18 x 2	18 x 2	12 x 1	12 x 1	12 x 1	12 x 1	12 x 1	12 x 1	12 x 1	12 x 1	12 x 1	
	- Solenoid Valve included * Kv-Value	[m³/h]	yes 0,92	yes 0,92	yes 0,92	yes 0,92	yes 0,92	yes 0,92	yes 0,34	yes 0,34	yes 0,34	yes 0,34	yes 0,34	yes 0,34	
50 2"	Actuator PAW		K10-500T	K10-500T	K10-400T	MA.3T	MA.3T	MA.3	MA.3	MA.3	MA.2T	MA.2T	MA.2	MA.2	
	Spring range [bar]	[bar]	2x1.9011	6x1.9011	6x1.9011	0,8-4,0	0,6-3,0	0,4-2,0	0,4-2,0	0,4-2,0	0,6-3,0	0,4-2,0	0,4-2,0	0,4-2,0	
	AIR SUPPLY [bar]	[bar]	7,0	6,0	7,5	5,5	4,5	6,0	5,0	4,0	6,0	4,0	6,0	5,0	
	operation time														
	- close / open [sec]	[sec]	4,0 / 7,0 ¹⁾	4,0 / 6,0 ¹⁾	4,0 / 6,0 ¹⁾	4,0 / 6,0 ¹⁾	4,0 / 5,0 ¹⁾	3,0 / 4,0 ¹⁾	7,0 / 11,0	7,0 / 10,0	5,0 / 6,0	5,0 / 6,0	6,0 / 10,0	5,0 / 10,0	
	- air pipe size	[mm]	18 x 2	18 x 2	18 x 2	18 x 2	18 x 2	18 x 2	18 x 2	18 x 2	12 x 1	12 x 1	12 x 1	12 x 1	
	- Solenoid Valve included * Kv-Value	[m³/h]	yes 0,92	yes 0,92	yes 0,92	yes 0,92	yes 0,92	yes 0,92	yes 0,92	yes 0,92	yes 0,92	yes 0,92	yes 0,34	yes 0,34	
50 2"	alternative actuator ²⁾	[cm ²]	5600	5600	2800										
	Spring range [bar]	[bar]	0,4-2,0	0,4-2,0	0,4-2,0										
	AIR SUPPLY [bar]	[bar]	5,0	4,0	6,0										
	operation time														
	- close / open [sec]	[sec]	9,0 / 12,0 ¹⁾	8,0 / 10,0 ¹⁾	5,0 / 8,0 ¹⁾										
	- air pipe size	[mm]	18 x 2	18 x 2	18 x 2										
	- Solenoid Valve included * Kv-Value	[m³/h]	yes 0,92	yes 0,92	yes 0,92										

1) with quick exhaust valve Kvs = 5,0 m³/h

with volume booster kvs = 10 m³/h

2) nom. travel 120 mm, max. travel 160 mm

Contact us



Volkmarsen, Germany

Sales and Operations

Phönix Valve Group GmbH

Volkmarsen, Germany
Phone: +49 5693 988 0
Email: info@phoenix-valvegroup.com
Website: www.phoenix-valvegroup.com

Phönix Armaturen Werke-Bregel GmbH

Volkmarsen, Germany
Phone: +49 5693 988 0
Email: info@phoenix-valvegroup.com
Website: www.phoenix-valvegroup.com

Strack GmbH

Volkmarsen, Germany
Phone: +49 5693 988 0
Email: info@phoenix-valvegroup.com
Website: www.phoenix-valvegroup.com

PAW SARL

Genay Cedex, France
Phone: +33 437 408 195
Email: commercial@phoenix-valvegroup.com
Website: www.phoenix-valvegroup.com

Daume Regelarmaturen GmbH

Volkmarsen, Germany
Phone: +49 5693 988 0
Email: info@phoenix-valvegroup.com
Website: www.phoenix-valvegroup.com

Solent & Pratt Phönix Ltd.

Volkmarsen, Germany
Phone: +49 5693 988 0
Email: info@phoenix-valvegroup.com
Website: www.phoenix-valvegroup.com



While this information is presented in good faith and believed to be accurate, Phönix Valve Group GmbH, does not guarantee satisfactory results from reliance on such information. Nothing contained herein is to be construed as a warranty or guarantee, expressed or implied, regarding the performance, merchantability, fitness or any other matter with respect to the products, nor as a recommendation to use any product or process in conflict with any patent. Phönix Valve Group GmbH, reserves the right, without notice, to alter or improve the designs or specifications of the products described herein.

© 2022 Phönix Valve Group. All rights reserved. Specifications are subject to change without notice. All trademarks are property of their respective owners

Printed in Germany
09/22-R0